

STAR TYPE MECHANICAL SEAL

TYPE : ST100 / ST105

Face Materials :

- Carbon / Ceramic / Silicon Carbide / Tungsten Carbide

Secondary Seals :

- Nitrile (NBR) / Viton (FKM) / Silicon

Hardware :

- SS 304 / SS 316

Operating Limits :

Size : 20 mm / 25 mm / 30 mm / 35 mm / 45 mm

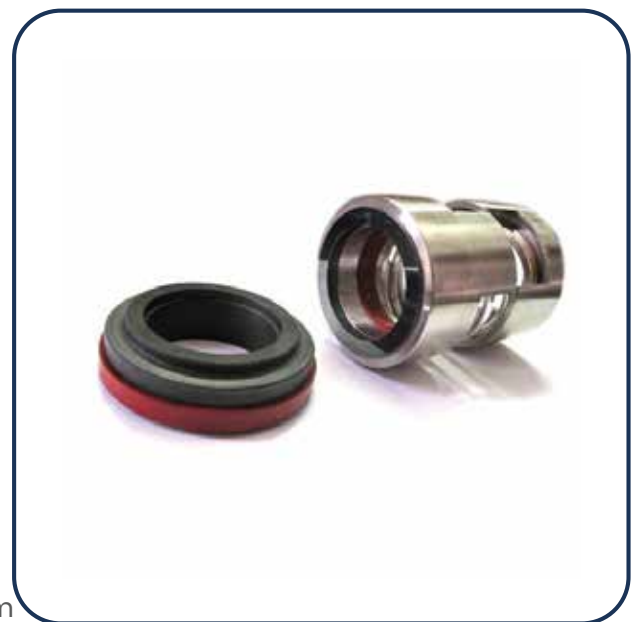
Pressure : 6 bars

Temperature : -20 TO +130 Deg. C

Speed : 2900 RPM

Application :

- Mud Slurry Pumps
- Viscous Fluids
- Textile Industries



Features :

- Single Seal
- Pusher Type
- Parallel Spring
- Internal Mounted
- Balance & Un Balanced Type
- Dependent on direction of rotation