

RUBBER BELLOW MECHANICAL SEAL (EQUIVALENT TO MG13)

TYPE : RB30

Face Materials :

- Carbon / Ceramic / Silicon Carbide / Tungsten Carbide

Elastomers:

- Nitrile (NBR) / Viton (FKM) / EPDM

Hardware :

- SS 304 / SS 316

Operating Limits :

Size: 12 mm to 100 mm (0.500" to 4.000")

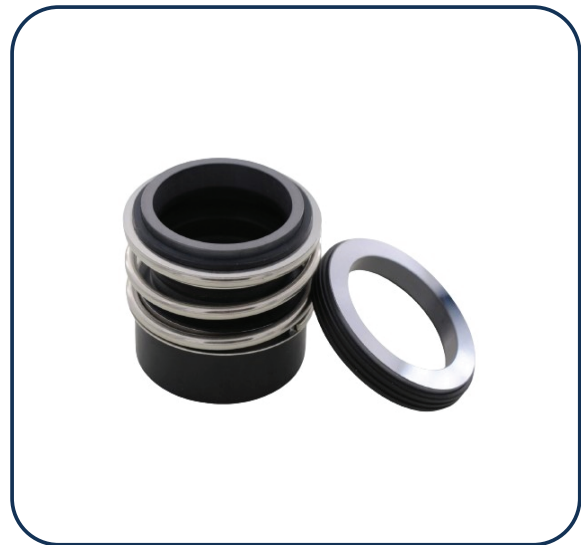
Speed: 2900 RPM

Pressure: 6 Bars

Temperature: -20 to +160 Deg. C

Application :

- Gear Pump
- Vacuum Pump
- Oil Compressor
- Sewage Application
- Mass produced Hot & Cold water Pumps for non-critical applications



Features :

- Single Seal
- Pusher Type
- Un - Balanced
- Internal Mounted
- Elastomeric Bellow
- Rotating Single Spring
- Single Helical Coil Spring
- Low Cost & Mass Produced
- Independent of Direction of Rotation
- Torque Transmission by Spring Holder