

WAVE SPRING MECHANICAL SEAL (EQUIVALENT TO EAGLE BURGMANN HJ92N TYPE)

TYPE : WS320 / WS325

Face Materials :

- Carbon / Ceramic / Silicon Carbide / Tungsten Carbide

Elastomer :

- Nitrile (NBR) / Viton (FKM) / EPDM / Aflas / PTFE / TTV / Kalrez (FFKM)

Hardware :

- SS 304 / SS 316 / Hastelloy - C / Alloy - 20 / Titanium

Operating Limits :

Size : 20 mm to 100 mm

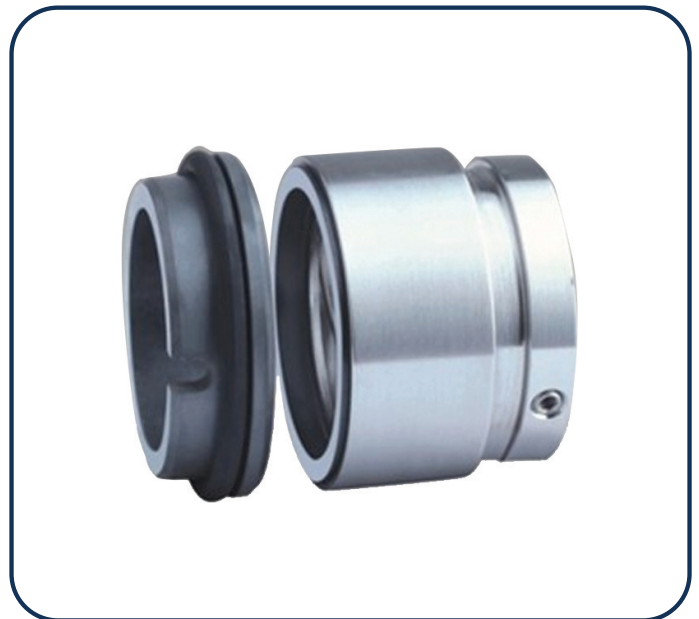
Pressure : 22 bars

Temperature : -45 Deg. to +180 Deg. C

Speed : 2900 RPM

Application :

- Hydrocarbons
- High Viscosity Fluids
- Light Abrasive Slurry
- Light Sewage Water
- Petrochemicals & Refinery Service



Features :

- Single Seal
- Pusher Type
- Internal Mounted
- Wave Spring Loaded
- Suitable for Short Space
- Springs are outside the Media
- Independent of direction of rotation
- Hydraulically Balanced & Un Balance