

DOUBLE CARTRIDGE MECHANICAL SEAL (MULTIPLE & WAVE SPRING TYPE)

TYPE : DC640, DC650, DC660 & DC670

Face Materials :

- Carbon / Silicon Carbide / Tungsten Carbide

Elastomers:

- Nitrile (NBR) / Viton (FKM) / EPDM / PTFE / TTV / EPR / Neoprene / Aflas

Hardware :

- SS 304 / SS 316 / Hastelloy-B & C / Alloy-20 / Titanium / Duplex SS

Operating Limits :

Size : 20mm to 300mm (3/4" to 12")

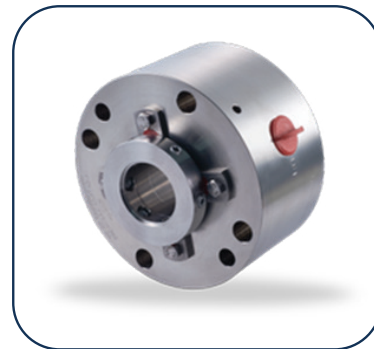
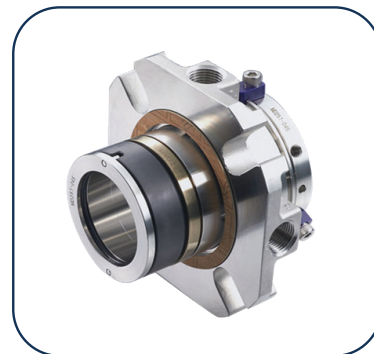
Pressure : 35 Bars

Temperature : -50 To +220 Deg. C

Speed : 2900 RPM

Application :

- Mixer
- Biochemistry
- Distillery Plants
- Food Industries
- Solvents Plants
- Sugar Factories
- Hazardous Liquid
- Rotary Equipment
- Steel Making Plants
- Fertilizers Industries
- Chemicals Industries
- Pulp & Paper Industries
- Petrochemical Industries
- Pharmaceutical Industries
- Oil Industries, Dyeing Industries



Features :

- Double Seal
- Cartridge Construction
- Tandem Arrangement
- Face-to-Face Arrangement
- Back-to-Back Arrangement
- Face-to-Back Arrangement
- Factory Assembled & Tested
- Multiple & Wave Spring Type
- Metric and Inch Sizes Available
- Quick Installation & Easy Removal
- Rotary & Stationary Spring Design
- Independent of Direction of Rotation
- With connection of Flushing & Quenching