

LIGHT DUTY SLURRY MECHANICAL SEAL

TYPE : LS810

Face Materials :

- Silicon Carbide / Tungsten Carbide

Secondary Seals :

- Viton (FKM) / EPDM / EPR / Aflas / PTFE / TTV / Kalrez (FFKM)

Hardware :

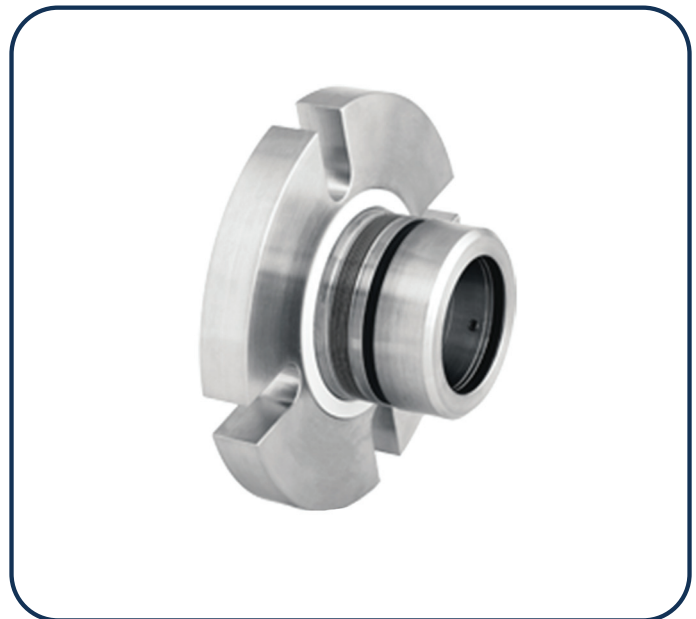
- SS 304 / SS 316 / Hastelloy-B & C / Alloy-20 / Titanium

Operating Limits :

- Size :** 20 mm to 220 mm
Pressure : 9 bars
Temperature : -20 TO +80 Deg. C
Speed : 2900 RPM
Solids : 10% Maximum solids by weight
Particle Size : 1000 Micron Maximum
Particle Hardness : 4 MOH Maximum

Application :

- Chemical & Mining Industries
- Mineral Sand Ore & Gold Mining
- Flue Gas Desulphurization (FGD)
- Hazardous Liquid ● Tar Sand Extraction
- Biochemistry & Other Rotary Equipment
- Pulp & Paper ● Steel Making ● Wet Cement
- Phosphate & Waste Water Treatment Plants
- Crystallization ● Petrochemical ● Synthetic Rutile
- Off-Shore Production (Sand/Gravel Oil Extraction)
- Copper ● Iron Ore ● Fertilizer ● Pigment ● Hard Rock
- Oil ● Zinc ● Food ● Power ● Potash ● Dyeing ● Solvent
- Pharmaceutical ● Tailings Disposal ● Building Services
- Bauxite & Iron Ore & Corn Slurries ● Vacuum Distillation
- Nickel & Alumina Refining ● Coal & Uranium Processing



Features :

- Single Seal
- Springs Isolated
- Multiple Spring Type
- Stationary Spring Type
- Factory Assembled & Tested
- Metric And Inch Sizes Available
- Quick Installation & Easy Removal
- Independent of Direction of Rotation
- Hydraulically Line to Line Balance Type
- Cartridge & Semi Cartridge Construction
- Without Connection of Flushing & Quenching