

MEDIUM DUTY SLURRY MECHANICAL SEAL

TYPE : MS820

Face Materials :

- Silicon Carbide / Tungsten Carbide

Secondary Seals :

- Viton (FKM) / EPDM / EPR / Aflas / PTFE / TTV / Kalrez (FFKM)

Hardware :

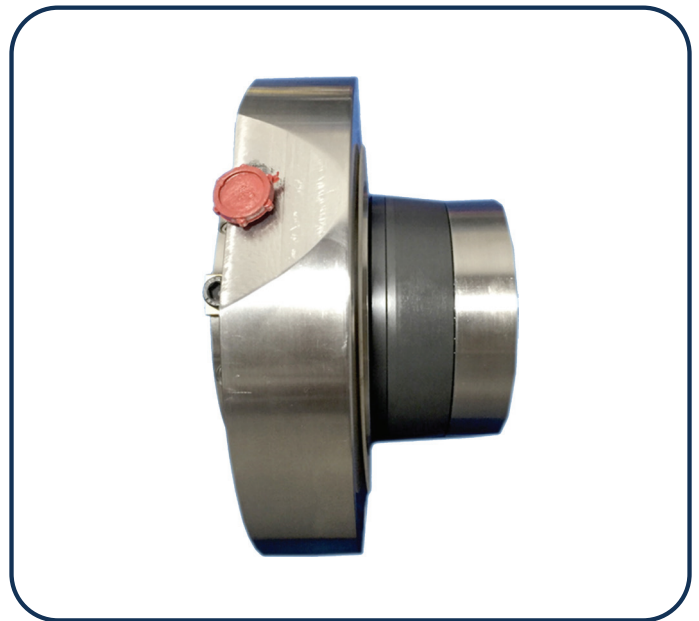
- SS 304 / SS 316 / Hastelloy-B & C / Alloy-20 / Duplex SS / Titanium

Operating Limits :

- Size :** 20 mm to 220 mm
Pressure : 15 bars
Temperature : -20 TO +220 Deg. C
Speed : 2900 RPM
Solids : 20% Maximum solids by weight
Particle Size : 6000 Micron Maximum
Particle Hardness : 7 MOH Maximum

Application :

- Flue Gas Desulphurization (FGD)
- Phosphate ● Waste Water Treatment
- Biochemistry & Other Rotary Equipment
- Building Services ● Hazardous Liquid Mixer
- Beverages Food ● Pulp & Paper ● Petrochemical
- Coal ● Uranium ● Copper ● Zinc ● Nickel ● Alumina
- Off-Shore Production (Sand/Gravel Oil Extraction)
- Pigment ● Solvents ● Steel Making ● Power ● Potash
- Corn Slurries ● Vacuum Distillation ● Crystallization
- Wet Cement Processing ● Bauxite & Iron Ore Slurries
- Pharmaceutical ● Oil ● Dyeing ● Fertilizers ● Chemicals
- Mining ● hard Rock ● Mineral Sand Ore ● Gold ● Iron Ore
- Tailings Disposal ● Tar Sand Extraction ● Synthetic Rutile



Features :

- Single Seal
- Springs Isolated
- Multiple Spring Type
- Stationary Spring Design
- Hydraulically Balanced Type
- Factory Assembled & Tested
- Metric And Inch Sizes Available
- Quick Installation & Easy Removal
- Independent of Direction of Rotation
- Cartridge & Semi Cartridge Construction
- With Connection of Flushing & Quenching