

Double Pass Rotary Joint (Fixed Siphon Type)

TYPE : RJ-1215

Face Materials :

- Carbon / Silicon Carbide / Tungsten Carbide

Secondary Seals :

- Nitrile (NBR) / Viton (FKM) / EPDM / Aflas / PTFE / Kalrez (FFKM)

Hardware :

- CS / SS 304 / SS 316 / SS 316L / Hastelloy-B & C

Operating Limits :

Size : 12.0 mm to 300.0 mm (0.500" to 12.000")

Media : Steam / Thermal Oil

Speed : 1500 RPM

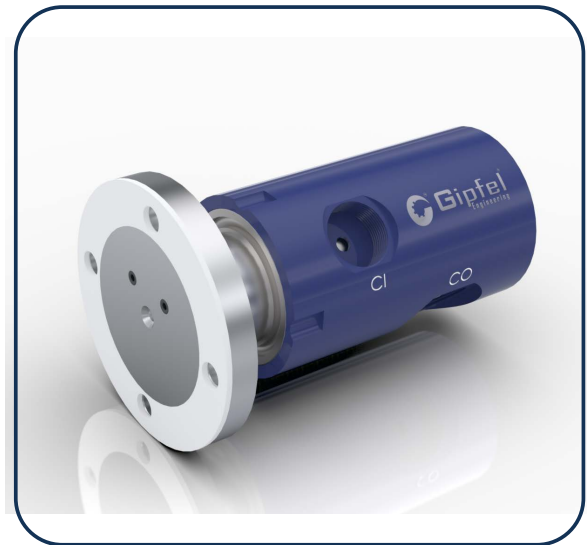
Pressure : 17 bars (247 PSI)

Temperature : -20 °C to +220 °C (-4 °F +428 °F)

Connection Types : Flanged (ANSI, DIN), Threaded (BSP, NPT)

Application :

- Textile Industry
- Chemical Industry
- Tyre Manufacturing
- Printing & Packaging,
- Pulp & Paper Industry
- Pharmaceutical Industry
- Food & Beverage Industry,
- Plastic & rubber Processing,
- Steel Plants, Steel & Metal processing Etc.



Single Dry Mechanical Seal

Key Features :

- **Directionally Independent Operation:** Functions effectively regardless of shaft rotation direction, enhancing application versatility.
- Available in
- **Externally Mounted Design:** Facilitates easy inspection, operation, and maintenance without disassembling the process equipment.
- **Optional Bearing Assembly:** Available with or without an integrated bearing to suit specific mechanical load and alignment requirements.
- **Rotary Multi-Spring Mechanism:** Ensures uniform axial load on the sealing faces, promoting stable performance and extended seal life.
- **Cost-Effective with Rapid Delivery:** Offers a practical balance of performance, affordability, and short lead times to meet operational demands.
- **Top and Side Entry Compatibility:** Engineered to accommodate both top and side shaft entry setups, offering broad installation flexibility.
- **Simplified Installation and Maintenance:** Designed for straightforward assembly and servicing, minimizing downtime and reducing maintenance costs.
- **Single Seal Configuration:** Delivers dependable sealing performance in dry-running applications, eliminating the need for complex dual-seal arrangements.
- **Factory Assembled and Tested:** Each unit is pre-assembled and rigorously tested to ensure optimal performance, consistency, and reliability upon installation.
- **No Cooling or Lubrication Required:** Eliminates the need for auxiliary cooling or lubrication systems, reducing complexity and operational overhead.
- **Flexible Construction Options:** Offered in Non-Cartridge, Semi-Cartridge, and Cartridge formats to align with different installation preferences and standards.
- **Balanced and Unbalanced Designs:** Available in both hydraulically balanced and unbalanced configurations to match varying pressure and process conditions.

➤ **DIMENSIONS FOR HIGHER SIZES AVAILABLE ON REQUEST**