

Metal Bellow Mechanical Seal (Double Cartridge Design (In-board Bellow Configuration))

TYPE : BD740

Face Materials :

- Carbon / Silicon Carbide / Tungsten Carbide

Secondary Seal :

- FKM (Viton) / EPDM / FFKM (Kalrez) / Graphite`

Hardware :

- SS 316 / SS 316L / Hastelloy C-276 / Alloy 20 / Duplex

Bellow Material :

- AM-350 / Alloy 20 / Hastelloy C / Inconel 625

Operating Limits :

Size: 20.0 mm to 200.0 mm (1.000" to 8.000")

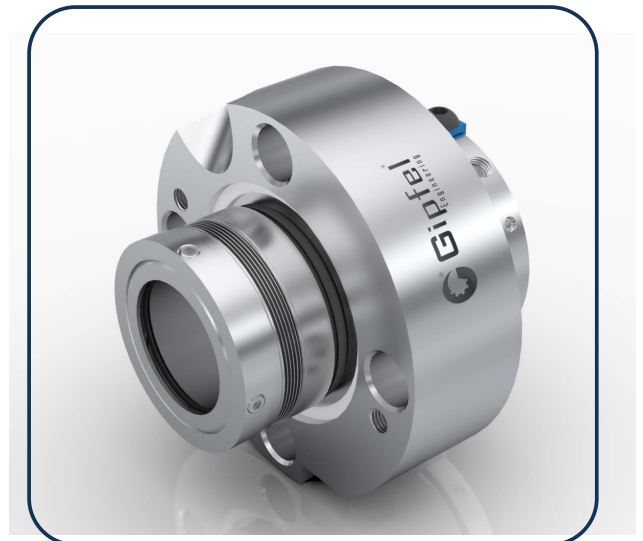
Speed: 3600 RPM

Pressure: 25 bars (362 PSI)

Temperature: -40 °C to +400 °C (-40 °F +752 °F)

Application :

- Fatty Acid
- LPG Plants
- Biochemistry
- Thermic Fluid
- Hydrocarbons
- Process Industry
- Hot & Cold Media
- Hazardous Liquid
- Chemical Industry
- Oil & Gas Industry
- High Temperature
- Refining Technology
- Petrochemical Industry Etc.



Metal Bellow Mechanical Seal (Double Cartridge Design (In-board Bellow Configuration))

Features :

- **High Reliability:** in handling volatile, abrasive, or environmentally hazardous media.
- **Industry Standardisation:** Designed for compliance with stringent industry standards including API, ANSI, and ISO.
- **Double-seal arrangement:** supports both pressurized (Plan 53) and unpressurized (Plan 52) barrier/buffer systems.
- **Non-Dependent on Shaft Rotation Direction:** Suitable for both clockwise and counter-clockwise rotating equipment, offering operational flexibility.
- **Available in Metric and Inch Sizes:** Compatible with a wide range of global equipment standards, facilitating seamless integration into new or existing systems.
- **Integrated Cooling Arrangement Connections:** Built-in ports for cooling enhance heat dissipation around the seal faces, extending seal life in high-temperature services.
- **Quick Installation and Easy Removal:** Cartridge design supports tool-free, fast installation and removal, minimizing maintenance time and maximizing plant uptime.
- **Double Cartridge Design:** Fully integrated, pre-assembled unit ensures precise alignment, simplifies installation, and reduces equipment downtime and human error
- **Factory Assembled and Pressure Tested:** Every seal undergoes rigorous quality checks and pressure testing to ensure leak-free performance and compliance with industry standards.
- **Double Seal Configuration:** Provides primary and secondary sealing for enhanced safety, ideal for hazardous or high-pressure applications requiring containment or barrier fluid systems.
- **In-Board Rotary & Stationary Bellow Design:** Combines the advantages of rotary and stationary bellow elements, enhancing thermal stability, sealing integrity, and resistance to shaft movement & misalignment.