

Double Cartridge Mechanical Seal (Tandem Arrangement)

TYPE : DC640

Face Materials :

- Carbon / Ceramic / Silicon Carbide / Tungsten Carbide

Secondary Seals :

- FKM (Viton) / EPDM / Aflas / EPR / Neoprene / FFKM (Kalrez) / PTFE / TTV

Hardware :

- SS 304 / SS 316 / Duplex / Hastelloy C-276 / Alloy 20 / Titanium

Operating Limits :

Size : 20.0 mm to 300.0 mm (0.750" to 12.000")

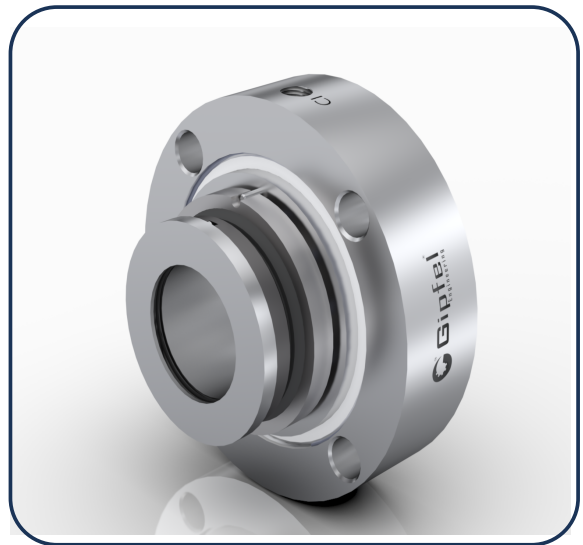
Speed : 3600 rpm

Pressure : 40 bars (580 psi)

Temperature : 40 °C to +220 °C (-40 °F +428 °F)

Application :

- Food industry
- Oil & gas industry
- Fertilizers industry
- Chemicals industry
- Refining technology
- Pulp & paper industry
- Petrochemical industry
- Power plant technology
- Pharmaceutical industry
- Process Pump & API pump etc.
- Sugar factory & distillery plant



Double Cartridge Mechanical Seal (Tandem Arrangement)

Features :

- **Double Seal:** Ensures enhanced sealing reliability and leakage prevention.
- **Cartridge Construction:** Preassembled design for easy installation and removal.
- **Available in Metric and Inch Sizes:** Compatible with different pump specifications.
- **Quick Installation & Easy Removal:** Reduces downtime and simplifies maintenance.
- **Tandem Arrangement:** Provides additional safety and backup sealing performance.
- **Flushing & Quenching Connections:** Enhances cooling, lubrication, and seal longevity.
- **Multiple & Wave Spring Type:** Suitable for various applications and operating conditions.
- **Factory Assembled & Tested:** Guarantees quality, reliability, and performance consistency.
- **Independent of Shaft Rotation Direction:** Offers versatile application across different pump types.
- **Rotating Multiple Spring Design:** Ensures uniform pressure distribution for improved sealing efficiency.

➤ **DIMENSIONS FOR HIGHER SIZES AVAILABLE ON REQUEST**