

# Double Cartridge Mechanical Seal (Face-to-Face Arrangement)

## TYPE : DC660

### Face Materials :

- Carbon / Ceramic / Silicon Carbide / Tungsten Carbide

### Secondary Seals :

- FKM (Viton) / EPDM / Aflas / EPR / Neoprene / FFKM (Kalrez) / PTFE / TTV

### Hardware :

- SS 304 / SS 316 / Duplex / Hastelloy C-276 / Alloy 20 / Titanium

### Operating Limits :

**Size:** 20.0 mm to 300.0 mm (0.750" to 12.0")

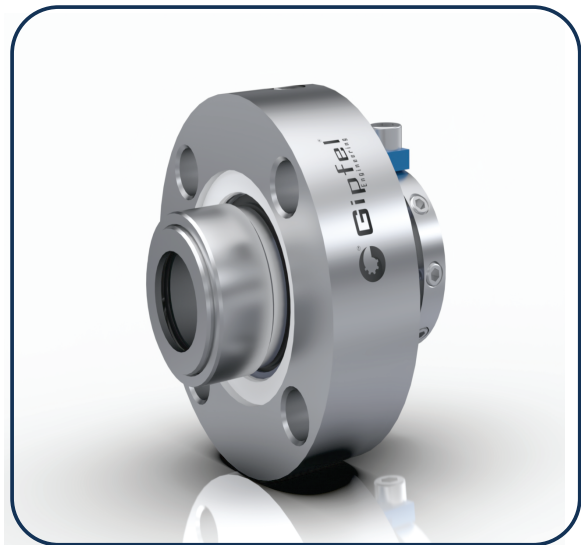
**Speed:** 3600 rpm

**Pressure:** 40 bars (580 psi)

**Temperature:** -40 °C to +220 °C (-40 °F +428 °F)

### Application :

- Food industry
- Oil & gas industry
- Fertilizers industry
- Chemicals industry
- Refining technology
- Pulp & paper industry
- Petrochemical industry
- Power plant technology
- Pharmaceutical industry
- Process pump & API pump etc.
- Sugar factory & distillery plant



## Double Cartridge Mechanical Seal (Face-to-Face Arrangement)

### Features :

- **Double Seal:** Ensures enhanced sealing reliability and leakage prevention.
- **Cartridge Construction:** Preassembled design for easy installation and removal.
- **Available in Metric and Inch Sizes:** Compatible with different pump specifications.
- **Quick Installation & Easy Removal:** Reduces downtime and simplifies maintenance.
- **Flushing & Quenching Connections:** Enhances cooling, lubrication, and seal longevity.
- **Multiple & Wave Spring Type:** Suitable for various applications and operating conditions.
- **Factory Assembled & Tested:** Guarantees quality, reliability, and performance consistency.
- **Independent of Shaft Rotation Direction:** Offers versatile application across different pump types.
- **Rotating Multiple Spring Design:** Ensures uniform pressure distribution for improved sealing efficiency.
- **Face-to-Face Arrangement:** Optimized for handling dual media or pressure variations within the system.

➤ **DIMENSIONS FOR HIGHER SIZES AVAILABLE ON REQUEST**