

Light Duty Slurry Mechanical Seal (Stationary Spring Configuration)

TYPE : LS810

Face Materials :

- Silicon Carbide / Tungsten Carbide

Secondary Seals :

- FKM (Viton) / EPDM / Aflas / EPR / Neoprene / FFKM (Kalrez) / PTFE

Hardware :

- SS 304 / SS 316 / Duplex / Hastelloy C-276

Operating Limits :

Size : 20.0 mm to 300.0 mm (0.750" to 12.000")

Solids : 10% Maximum solids by weight

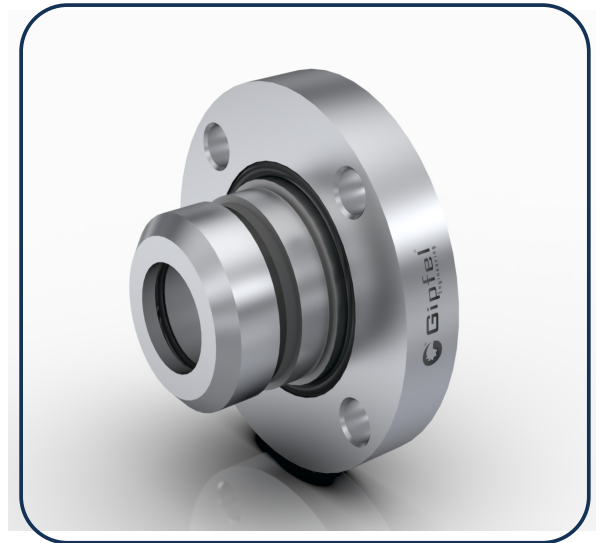
Speed : 3000 RPM

Pressure : 16 bars (232 psi)

Particle Size : 1000 Microns Maximum

Temperature : -20°C to +180°C (-4°F +356°F)

Particle Hardness : 4 Mohs Maximum



Application		
Plants & Industries	Mining, Refining & Processing	Others
<ul style="list-style-type: none"> • Power Plant • Potash Plant • Pigment Plant • Solvent Plant • Phosphate Plant • Steel Making Plant • Synthetic Rutile Plant • Tar Sand Extraction Plant • Waste Water Treatment Plant • Dyeing Industry • Mining Industry • Fertilizer Industry • Chemical Industry • Pulp & Paper Industry • Food & Sugar Industry • Pharmaceutical Industry • Oil & Petrochemical Industry 	<ul style="list-style-type: none"> • Gold Mining • Hard Rock Mining • Mineral Sand Ore Mining • Zinc Refining • Nickel Refining • Copper Refining • Alumina Refining • Coal Processing • Iron Ore Processing • Uranium Processing • Wet Cement Processing 	<ul style="list-style-type: none"> • Corn Slurry • Crystallization • Tailings Disposal • Building Service • Hazardous Liquid • Vacuum Distillation • Bauxite & Iron Ore Slurry • Flue Gas Desulphurization (FGD) • Mixer & Other Rotary Equipment Etc. • Off-Shore Production (Sand / Gravel Oil Extraction)

Light Duty Slurry Mechanical Seal (Stationary Spring Configuration)

Technical Features :

- **Hard-Faced Seal Combinations:** Abrasion-resistant faces extend service life.
- **Multiple Spring Design:** Ensures uniform face loading and extended seal life.
- **Hydraulically Line-to-Line Balanced Type:** Minimizes face wear and extends service life.
- **Available in Metric and Inch Sizes:** Facilitates global compatibility across equipment standards.
- **Stationary Spring Arrangement:** Provides stability and enhances performance in abrasive conditions.
- **Quick Installation & Easy Removal:** Cartridge design simplifies maintenance and reduces downtime.
- **Isolated Springs:** Protects springs from slurry exposure, preventing clogging and improving reliability.
- **Bi-Directional Operation:** Functions independently of shaft rotation direction, reducing inventory needs.
- **Single Seal Configuration:** Cost-effective and easy to maintain; suitable for light-duty slurry applications.
- **Cartridge and Semi-Cartridge Options:** Offers flexibility for equipment design and retrofit requirements.
- **Optimized for Light Slurries:** Suitable for up to 10% solids concentration and low to moderate slurry abrasiveness.
- **Without Connection of Flushing & Quenching:** Eliminates the need for external flush, preventing product dilution.
- **Factory-Assembled & Pressure-Tested:** Guarantees performance consistency and minimizes field installation errors.
- **Water-Saving Design:** Helps meet sustainability goals by reducing dependency on process or utility water for seal operation.
- **No External Flush or Cooling Water Required:** Eliminates product dilution, lowers water usage, and reduces environmental footprint.
- **No Flush or Quench Connections Required:** Operates reliably without external liquid support, reducing water usage and simplifying piping.