

# Single Cartridge Mechanical Seal [Multi Spring Type (External Mounted)]

## TYPE : SC615

### Face Materials :

- Carbon / Silicon Carbide / Tungsten Carbide

### Secondary Seals :

- Viton (FKM) / EPDM / Aflas / EPR / Neoprene  
TTV / Kalrez (FFKM) / PTFE / TTV

### Hardware :

- SS 304 / SS 316 / Hastelloy-B & C / Alloy-20 /  
Titanium

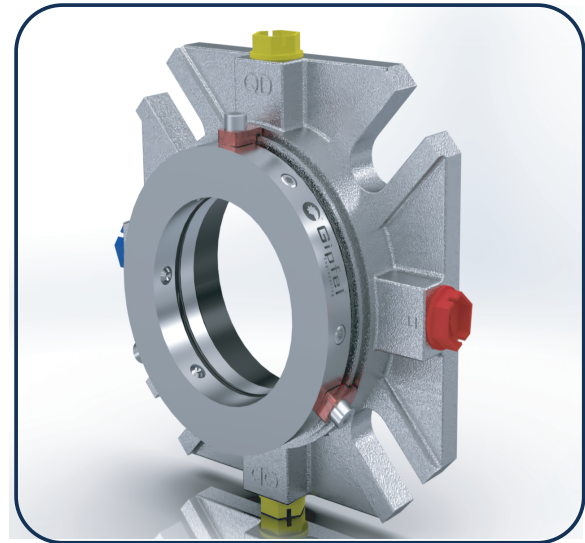
### Operating Limits :

**Size:** 20.0 mm to 300.0 mm (0.750" to 12.0")

**Speed:** 3600 rpm

**Pressure:** 40 bars (580 psi)

**Temperature:** -40 °C to +220 °C (-40 °F +428 °F)



### Application :

- Solvent Plant
- Chilling Plant
- Steel Industry
- Process Pumps
- Mining Industry
- Process Industry
- Industrial Blower
- Centrifugal Pump
- Chemical Industry
- Refining Technology
- Pulp & Paper Industry
- Petrochemical Industry
- Power Plant Technology
- Food & Beverage Industry
- Water & Waste Water Technology
- Pharmaceutical Industry, Oil & Gas Industry
- Biochemistry, & Other Rotary Equipment Etc.

# Single Cartridge Mechanical Seal (Multiple Spring Type)

## Features :

- **External Arrangement** for easy access and maintenance.
- **Single Seal** for efficient and reliable sealing performance.
- Available in **Metric and Inch Sizes** for global compatibility.
- **Cartridge Construction** for simplified installation and alignment.
- **Factory Assembled & Tested** to ensure quality and operational reliability.
- **Quick Installation & Easy Removal** to minimize downtime and maintenance efforts.
- **Multiple & Wave Spring Type** for uniform load distribution and enhanced performance.
- **Independent of Direction of Rotation**, making it suitable for various operating conditions.
- **Cost-Effective** due to **Refurbishment Possibilities**, extending seal life and reducing expenses.
- **Hydraulically Balanced Design Options** for optimized sealing performance under different pressures.
- Available **with or without connections for Flushing & Quenching**, depending on application requirements.

➤ **DIMENSIONS FOR HIGHER SIZES AVAILABLE ON REQUEST**